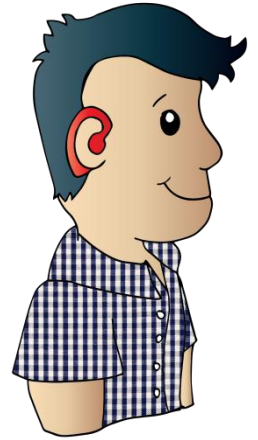




Supporting Students who are Deaf or Hard of Hearing



Provincial Inclusive Education Conference

Fort Garry Hotel
October 22, 2015
8:30 – 3:30

Go to www.dhhpiec.ca for session information and to register.

For conference information, please contact Nancy at
nancy.schenkeveld@gov.mb.ca or 204-918-2651.

Registration Information:

| | <u>Before Oct. 2, 2015</u> | <u>After Oct. 2, 2015</u> |
|-----------------------|--------------------------------|--------------------------------|
| Professional | \$150 full day/ \$100 half day | \$180 full day/ \$130 half day |
| Educational Assistant | \$80 (full or half day) | \$100 (full or half day) |
| Parent | \$80 (full or half day) | \$100 (full or half day) |
| Student | \$80 (full or half day) | \$100 (full or half day) |
| Optional lunch | \$16.40 | |

Please make cheques payable to DHH PIEC and send them to:

DHH PIEC Conference
c/o CSHC
2 – 1325 Markham Rd.
Winnipeg, MB R3T 4J6

Join us for essential resources, knowledge and tools to build successful learning environments for students who are Deaf and Hard of Hearing.

